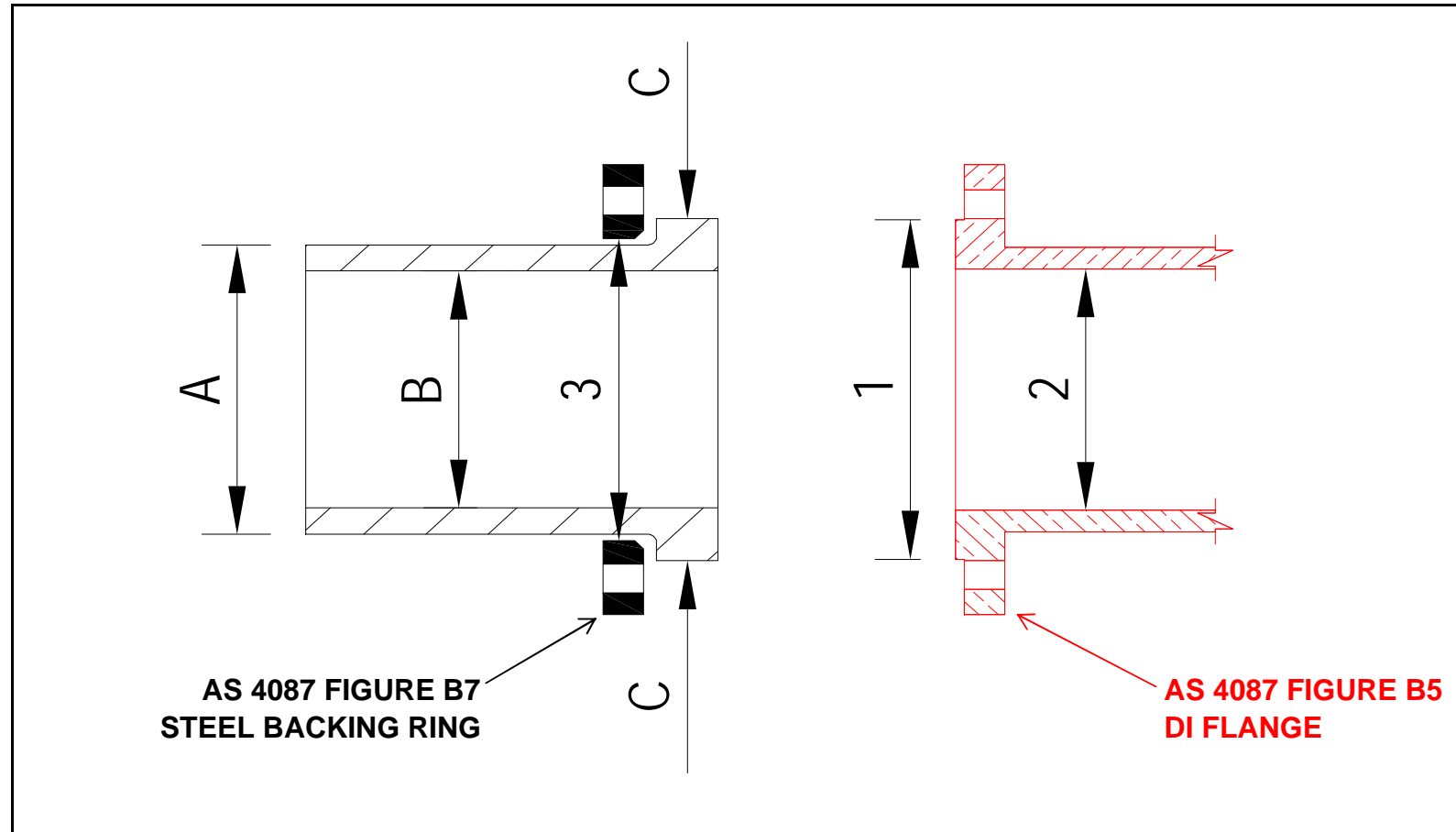


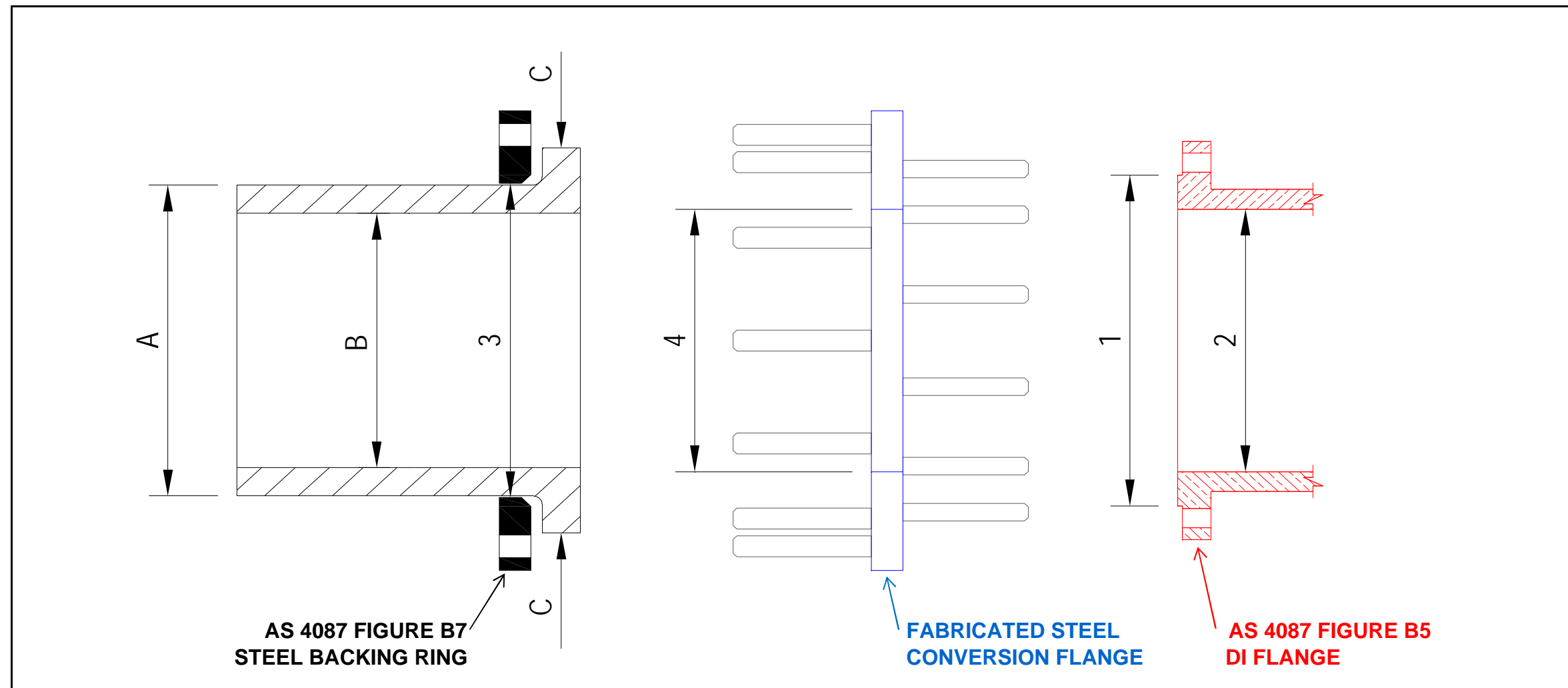
CONVENTIONAL PE STUB FLANGE AND BACKING RING



Nominal Bore	A (OD of PE)	SDR	B (ID of PE)	Back. Ring Flange Size* (see notes)	C (OD of PE Flange)	1 (OD of 4087 Raised Face)	% of Raised Face Engaged by PE Flange	2 (ID of Fitting)	Step in Bore	3 Backing Ring ID (from POP007)
100	125	13.6	106.6	100	164	154	99%	100	negligible	135
100	125	11.0	102.3	100	164	154	99%	100	negligible	135
150	180	13.6	153.5	150	220	211	99%	150	negligible	188
150	180	11.0	147.3	150	220	211	100%	150	negligible	188

* Note: Steel Backing Rings Shall Comply With AS 4087 Figure B7

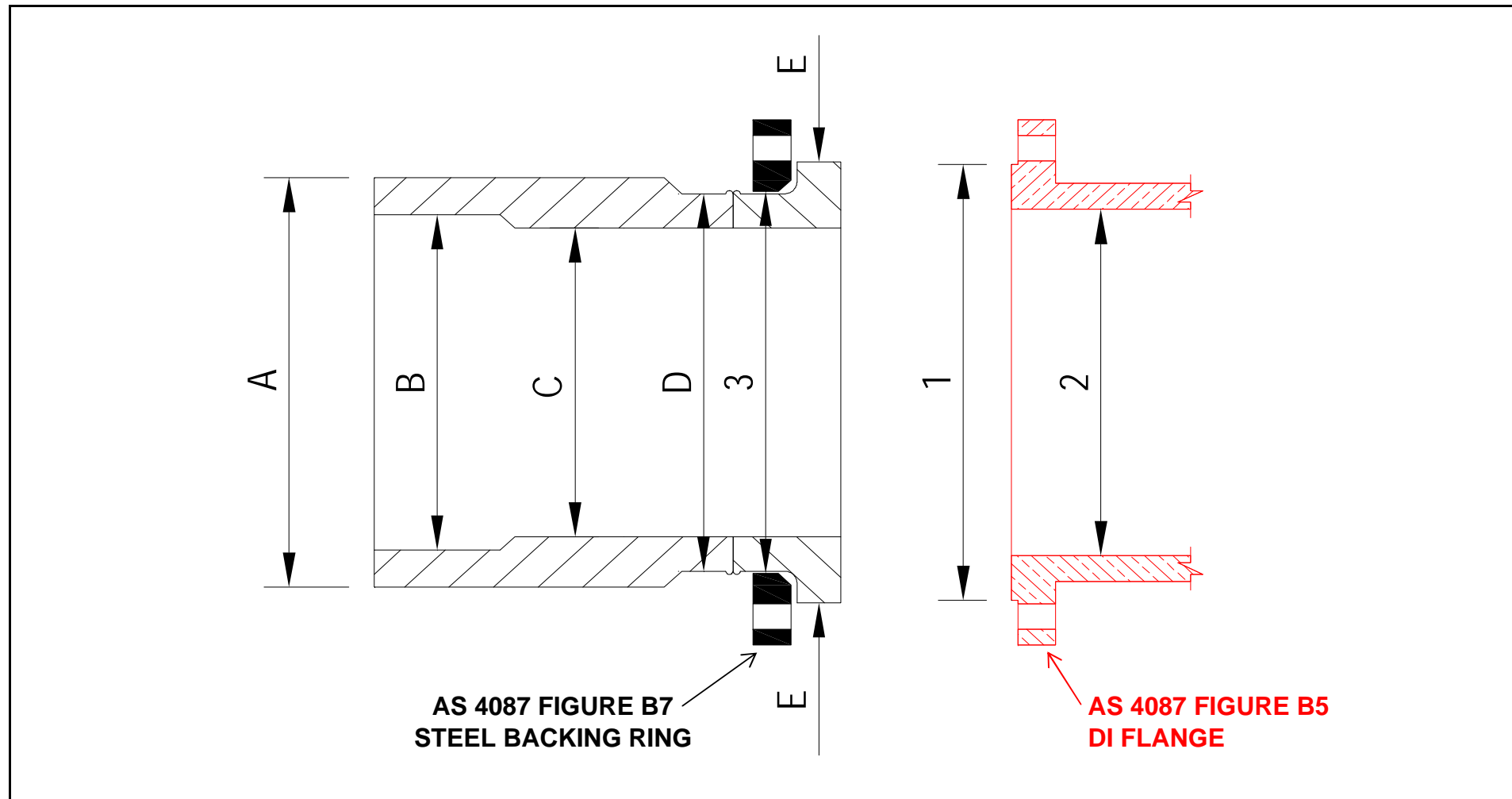
CONVENTIONAL PE STUB FLANGE AND BACKING RING WITH CONVERSION FLANGE



Nominal Bore	A (OD of PE Pipe)	SDR	B (ID of PE Pipe)	Back. Ring Flange Size* (from POP007) (see notes)	3 Back. Ring Flange ID (from POP007)	C (OD of PE Flange)	4 (ID of Conversion Flange)	Thickness of Conversion Flange	1 (OD of 4087 Raised Face)	% of Raised Face Engaged by PE Flange	Backing Ring ID (from POP007)	2 (ID of Fitting)	Step in Bore	Conversion Flange
100	125	13.6	106.6	100	135	164	N/A	N/A	154	99%	128	100	negligible	not required
100	125	11.0	102.3	100	135	164	N/A	N/A	154	99%	128	100	negligible	not required
150	180	13.6	153.5	150	188	220	N/A	N/A	211	99%	188	150	negligible	not required
150	180	11.0	147.3	150	188	220	N/A	N/A	211	100%	188	150	negligible	not required
200	250	13.6	213.2	250	288	332	200	30 mm	268	100%	288	200	approx. 12 mm	250 x 200
200	250	11.0	204.5	250	288	332	200	30 mm	268	100%	288	200	approx. 10 mm	250 x 200
300	355	13.6	302.8	350	376	442	300	30 mm	378	100%	376	300	negligible	350 x 300
300	355	11.0	290.5	350	376	442	300	30 mm	378	100%	376	300	approx. 10 mm	350 x 300
300	400	13.6	341.2	400	430	491	300	30 mm	378	100%	430	300	approx. 30 mm	
300	400	11.0	327.3	400	430	491	300	30 mm	378	100%	430	300	approx. 25 mm	
375	450	13.6	383.8	450	470	556	375	30 mm	463	100%	470	375	negligible	
375	450	11.0	368.2	450	470	556	375	30 mm	463	100%	470	375	negligible	

* Note: Steel Backing Rings Shall Comply With AS 4087 Figure B7

TYCO PATTERN SLIMLINE PE STUB FLANGE AND BACKING RING



Nominal Bore	A (OD of PE Pipe)	SDR	B (ID of PE Pipe)	D (OD of Stub Flange - Flange End)	C (ID of Stub Flange - Flange End)	E (OD of PE Flange)	Back. Ring Flange Size* (see notes)	1 (OD of 4087 Raised Face)	% of Raised Face Engaged by PE Flange	3 Backing Ring ID (from Tyco)	2 (ID of Fitting)	Step in Bore	Conversion Flange
100	125	13.6	106.6	N/A	N/A	N/A	N/A	N/A	N/A	N/A	N/A	N/A	N/A
100	125	11.0	102.3	N/A	N/A	N/A	N/A	N/A	N/A	N/A	N/A	N/A	N/A
150	180	13.6	153.5	N/A	N/A	N/A	N/A	N/A	N/A	N/A	N/A	N/A	N/A
150	180	11.0	147.3	N/A	N/A	N/A	N/A	N/A	N/A	N/A	N/A	N/A	N/A
200	250	13.6	213.2	N/A	N/A	N/A	N/A	N/A	N/A	N/A	N/A	N/A	N/A
200	250	11.0	204.5	233.0	190.6	271.0	200	268	100%	237	200	approx. 10 mm	not required
300	355	13.6	302.8	N/A	N/A	N/A	N/A	N/A	N/A	N/A	N/A	N/A	N/A
300	355	11.0	290.5	327.0	267.5	382.0	300	378	100%	331	300	approx. 30 mm	not required
300	400	13.6	341.2	N/A	N/A	N/A	N/A	N/A	N/A	N/A	N/A	N/A	N/A
300	400	11.0	327.3	327.0	267.5	382.0	300	378	100%	331	300	approx. 30 mm	not required
375	450	13.6	383.8	N/A	N/A	N/A	N/A	N/A	N/A	N/A	N/A	N/A	N/A
375	450	11.0	368.2	439.0	359.0	465.0	375	463	100%	443	375	approx. 16 mm	not required

Note: red text indicates size is estimated by GHD - not designed by Tyco

* Note: Steel Backing Rings Shall Comply With AS 4087 Figure B7
AML: Stub Flange and Backing Rings 2012

APPROVED MATERIALS LIST
Stub Flange and Backing Ring Tables

PE TO DI CONVERSION FLANGE



DN	OD - Flange		OD - Raised Face		PCD		Number of Bolts		Fastener		Hole Size	
	AS 4087	BS10 Table D	AS 4087	BS10 Table D	AS 4087	BS10 Table D	AS 4087	BS10 Table D	AS 4087	BS10 Table D	AS 4087	BS10 Table D
100	215	215	154	154	178	178	4	4	M16	M16	18	18
150	280	280	211	211	235	235	8	8	M16	M16	18	18
200	335	335	268	268	292	292	8	8	M16	M16	18	18
250 ¹	405	405	328	328	356	356	8	8	M20	M20	22	22
300	455	455	378	378	406	406	12	12	M20	M20	22	22
350 ²	525	525	438	438	470	470	12	12	M24	M24	26	26
375 ³	550	N/A	463	N/A	495	N/A	12	N/A	M24	N/A	26	N/A
400	580	580	489	489	521	521	12	12	M24	M24	26	26

- Notes:
- ¹ used with DN 250 stub flange
 - ² used with DN355 stub flange
 - ³ there is no DN375 in BS10 Table D